



Demographic and Income Profile

37840 (Oliver Springs)
 37840 (Oliver Springs)
 Geography: ZIP Code

Prepared by Esri

| Summary | Census 2010 | Census 2020 | 2022 | 2027 |
|-------------------------------|-------------|-------------|-------|-------|
| Population | 10,070 | 9,527 | 9,453 | 9,404 |
| Households | 4,056 | 3,913 | 3,885 | 3,862 |
| Families | 2,891 | - | 2,710 | 2,681 |
| Average Household Size | 2.48 | 2.43 | 2.43 | 2.43 |
| Owner Occupied Housing Units | 3,166 | - | 3,075 | 3,075 |
| Renter Occupied Housing Units | 890 | - | 811 | 787 |
| Median Age | 42.1 | - | 44.8 | 45.7 |

| Trends: 2022-2027 Annual Rate | Area | State | National |
|-------------------------------|--------|-------|----------|
| Population | -0.10% | 0.52% | 0.25% |
| Households | -0.12% | 0.55% | 0.31% |
| Families | -0.21% | 0.45% | 0.28% |
| Owner HHs | 0.00% | 0.77% | 0.53% |
| Median Household Income | 3.10% | 3.87% | 3.12% |

| Households by Income | 2022 | | 2027 | |
|-----------------------|--------|---------|--------|---------|
| | Number | Percent | Number | Percent |
| <\$15,000 | 524 | 13.5% | 361 | 9.3% |
| \$15,000 - \$24,999 | 393 | 10.1% | 290 | 7.5% |
| \$25,000 - \$34,999 | 304 | 7.8% | 272 | 7.0% |
| \$35,000 - \$49,999 | 532 | 13.7% | 514 | 13.3% |
| \$50,000 - \$74,999 | 680 | 17.5% | 746 | 19.3% |
| \$75,000 - \$99,999 | 581 | 15.0% | 599 | 15.5% |
| \$100,000 - \$149,999 | 530 | 13.6% | 615 | 15.9% |
| \$150,000 - \$199,999 | 204 | 5.3% | 281 | 7.3% |
| \$200,000+ | 137 | 3.5% | 183 | 4.7% |

| | | |
|--------------------------|----------|----------|
| Median Household Income | \$55,162 | \$64,262 |
| Average Household Income | \$75,953 | \$90,385 |
| Per Capita Income | \$31,054 | \$36,927 |

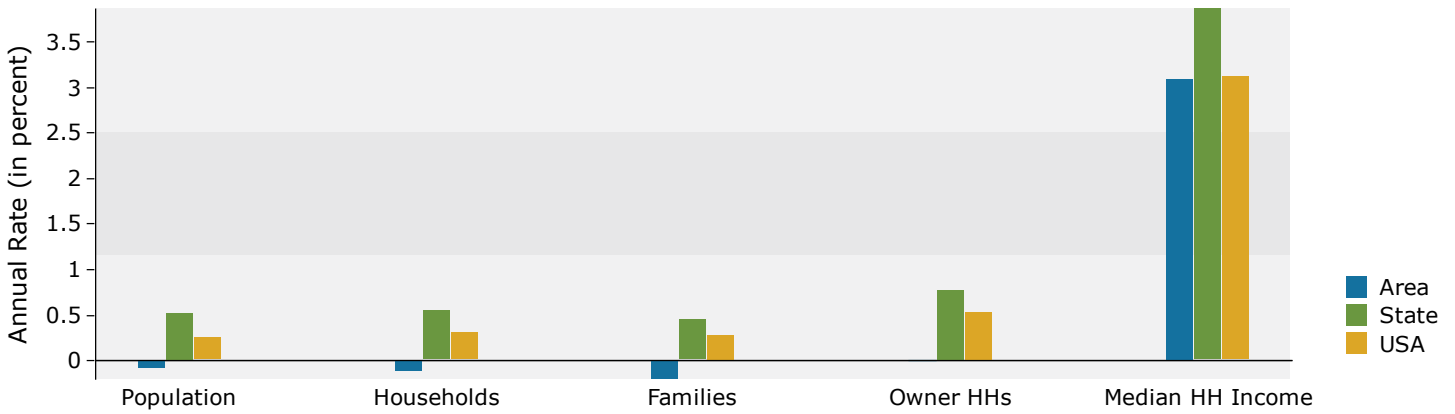
| Population by Age | Census 2010 | | 2022 | | 2027 | |
|-------------------|-------------|---------|--------|---------|--------|---------|
| | Number | Percent | Number | Percent | Number | Percent |
| 0 - 4 | 554 | 5.5% | 450 | 4.8% | 439 | 4.7% |
| 5 - 9 | 655 | 6.5% | 512 | 5.4% | 493 | 5.2% |
| 10 - 14 | 678 | 6.7% | 540 | 5.7% | 558 | 5.9% |
| 15 - 19 | 661 | 6.6% | 538 | 5.7% | 524 | 5.6% |
| 20 - 24 | 470 | 4.7% | 444 | 4.7% | 414 | 4.4% |
| 25 - 34 | 1,069 | 10.6% | 1,116 | 11.8% | 988 | 10.5% |
| 35 - 44 | 1,336 | 13.3% | 1,151 | 12.2% | 1,204 | 12.8% |
| 45 - 54 | 1,541 | 15.3% | 1,211 | 12.8% | 1,177 | 12.5% |
| 55 - 64 | 1,501 | 14.9% | 1,428 | 15.1% | 1,315 | 14.0% |
| 65 - 74 | 929 | 9.2% | 1,295 | 13.7% | 1,332 | 14.2% |
| 75 - 84 | 518 | 5.1% | 589 | 6.2% | 751 | 8.0% |
| 85+ | 155 | 1.5% | 179 | 1.9% | 205 | 2.2% |

| Race and Ethnicity | Census 2010 | | Census 2020 | | 2022 | | 2027 | |
|----------------------------|-------------|---------|-------------|---------|--------|---------|--------|---------|
| | Number | Percent | Number | Percent | Number | Percent | Number | Percent |
| White Alone | 9,669 | 96.0% | 8,873 | 93.1% | 8,782 | 92.9% | 8,675 | 92.2% |
| Black Alone | 138 | 1.4% | 143 | 1.5% | 143 | 1.5% | 145 | 1.5% |
| American Indian Alone | 17 | 0.2% | 25 | 0.3% | 25 | 0.3% | 25 | 0.3% |
| Asian Alone | 38 | 0.4% | 30 | 0.3% | 30 | 0.3% | 31 | 0.3% |
| Pacific Islander Alone | 4 | 0.0% | 2 | 0.0% | 2 | 0.0% | 2 | 0.0% |
| Some Other Race Alone | 13 | 0.1% | 59 | 0.6% | 60 | 0.6% | 66 | 0.7% |
| Two or More Races | 192 | 1.9% | 395 | 4.1% | 411 | 4.3% | 461 | 4.9% |
| Hispanic Origin (Any Race) | 66 | 0.7% | 146 | 1.5% | 147 | 1.6% | 151 | 1.6% |

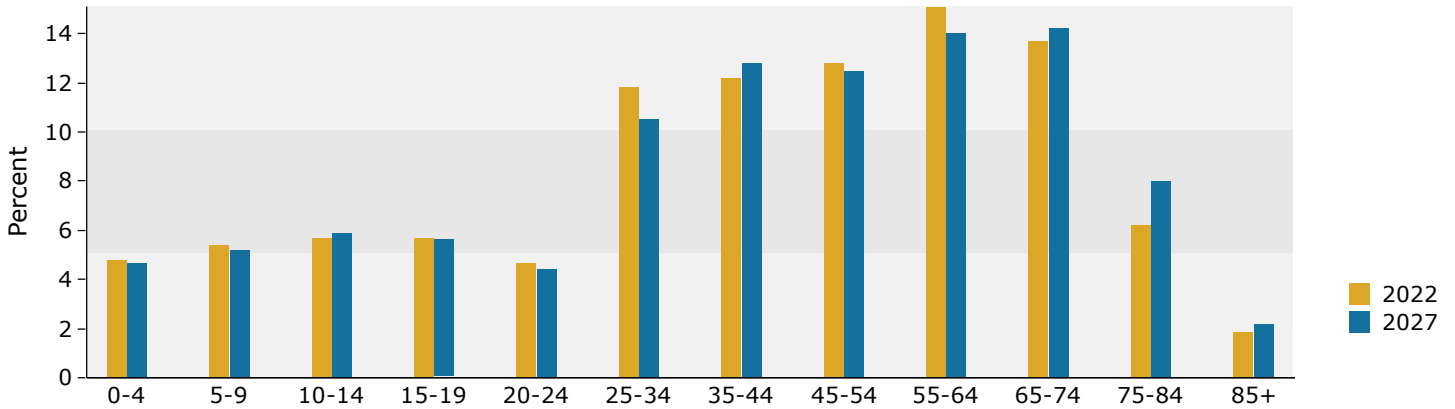
Data Note: Income is expressed in current dollars.

Source: Esri forecasts for 2022 and 2027. U.S. Census Bureau 2010 decennial Census data converted by Esri into 2020 geography.

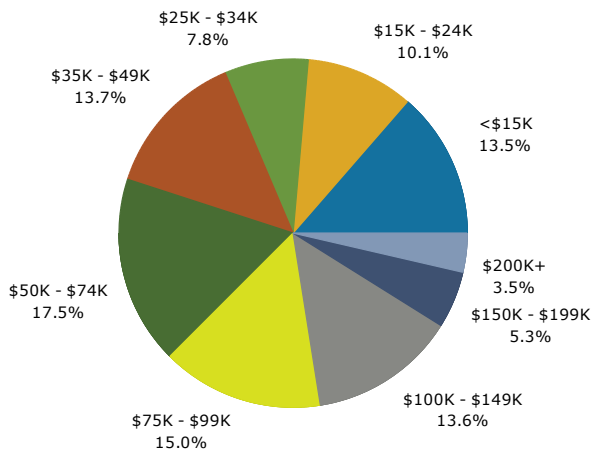
Trends 2022-2027



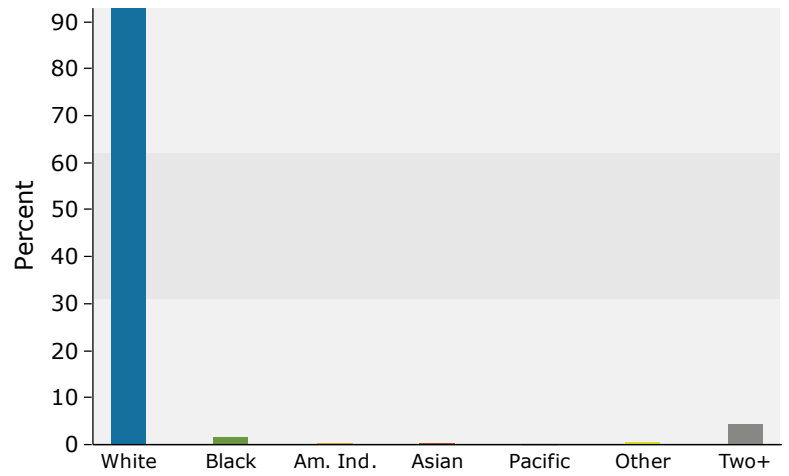
Population by Age



2022 Household Income



2022 Population by Race



2022 Percent Hispanic Origin: 1.6%

Source: Esri forecasts for 2022 and 2027. U.S. Census Bureau 2010 decennial Census data converted by Esri into 2020 geography.